

# BRIDGEVIEW



**DEGELMAN V-RAKE  
VR1620**

**User Manual**



**Bridgeview Manufacturing Inc.  
P.O. Box 4  
Gerald, SK S0A 1B0  
(306) 745-2711  
Email: [bmi@sasktel.net](mailto:bmi@sasktel.net)  
[www.bridgeviewmanufacturing.com](http://www.bridgeviewmanufacturing.com)**

## **TABLE OF CONTENTS**

TABLE OF CONTENTS .....	2
INTRODUCTION .....	3
SAFETY PRECAUTIONS.....	3
MACHINE MAINTENANCE AND LUBRICATION.....	3
WHEEL AND TIRE INFORMATION.....	4
WHEEL EXTENSION .....	4
HYDRAULIC HOOK UP.....	5
REAR HITCH ADJUSTMENT .....	7
ADJUSTING RAKE WHEEL ARM SPRING TENSION .....	8
SPECIFICATIONS.....	10

## **INTRODUCTION**

Thank you for purchasing your new **Degelman V-Rake**. With the proper operation and service as outlined in this manual, this V-Rake will provide you with years of trouble free operation.

## **SAFETY PRECAUTIONS**

The following safety precautions **MUST** be followed to ensure the safe operation of the Degelman V-Rake:

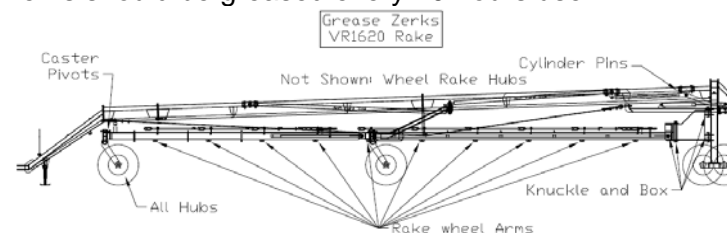
1. This trailed machine was designed and intended for on-farm use only. Tow at speeds not to exceed 20 MPH. Slow down for hills, curves, rough area, and in advance of braking to prevent loss of control and possible injury or death.
2. **Always** turn off the tractor when leaving the operating platform.
3. **Always** use a safety chain and the transport links when towing the V-Rake on the highway.
4. Unless operating tractor, **stand clear** of the rake when in operation.
5. **Do not** stand inside the rake while it is being opened or closed.

## **MACHINE MAINTENANCE AND LUBRICATION**

General maintenance of your V-Rake should be done on a regular basis. This includes checking all bolts to ensure they are tight, making sure all grease zerks are accepting grease and ensuring that all moving parts are functioning correctly.

Your Bale King V-Rake is equipped with a number of grease zerks. It is important that these locations are lubricated according to the following maintenance schedule:

- Wheel hubs for the tires and rake wheels should be greased every 200 hours of use.
- Knuckles, scissor arm pins, lift arms and any remaining grease zerks should be greased every 10 hours use.



## **WHEEL AND TIRE INFORMATION**

The proper tire pressure for the Degelman V-Rake is 44 psi. Proper tire inflation will help alleviate a puncture problem when pulling and operating the machine in rough terrain.

The optimum tire size is 9.5L15SL, 8 Ply.

**NOTE:** Check and tighten wheel bolts on a regular basis to ensure that bolts are tight!

Warranty **does not** cover damaged rims and hubs due to loose wheel bolts.

Tire warranty is covered by the tire manufacturer.

### **18 WHEEL EXTENSION**

The 18 Wheel Rake can be fitted with an extension kit. This Kit extends the length of the rake arms, adding one rake wheel to each side, making the rake a 18 wheel rake. This option increases the area covered by the rake and can be purchased as a separate kit to the 16 wheel rake.

### **20 WHEEL EXTENSION**

The 20 Wheel Rake can be fitted with an extension kit. This Kit extends the length of the rake arms and the hitch, adding one rake wheel to each side, making the rake a 20 wheel rake. The extension kit also adds a cable gusset to the rake. This option increases the area covered by the rake and can be purchased as a separate kit to the 18 and 16 wheel rake.

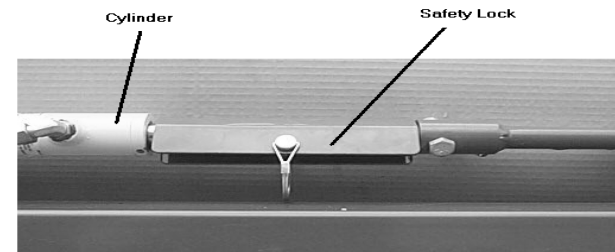
## HYDRAULIC HOOK UP

There are six hydraulic hoses to be connected to the tractor. All six hoses run out of the gooseneck of the rake, near the hitch. The hose marked with red adjusts the 48" cylinder, used to open and close the rake arms. The hose marked with blue adjusts the 20" cylinder, used to adjust the back opening. The hose marked with yellow adjusts the lift arm cylinders used to raise and lower the rake wheels. These hoses should be connected to the most convenient hydraulic hook ups on the tractor. The long red and blue open the rake while the long yellow lifts the rake wheels.

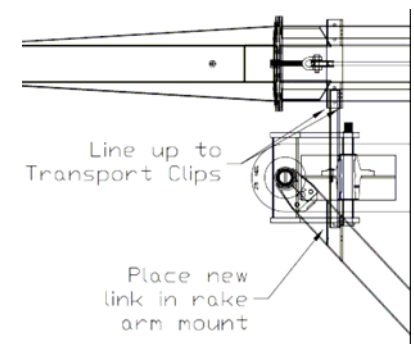
## HIGHWAY TRAVEL

When transporting your V-Rake on the highway there are a number of safety precautions that must be taken to ensure safe travel.

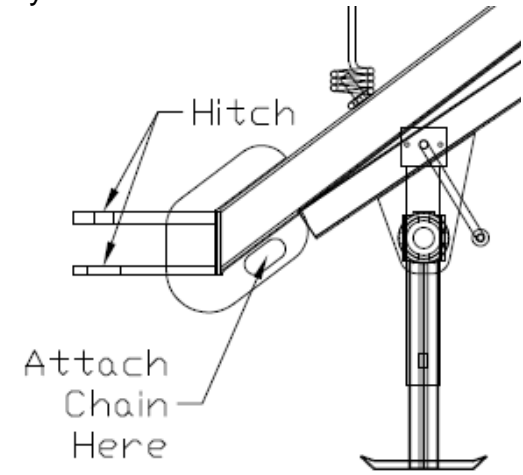
First is to insert the cylinder safety locks. The lift arm cylinders (located on the left and right rake arms) should be fitted with cylinder safety locks. To insert the safety locks, raise the rake wheels to their highest position, then insert the safety lock.



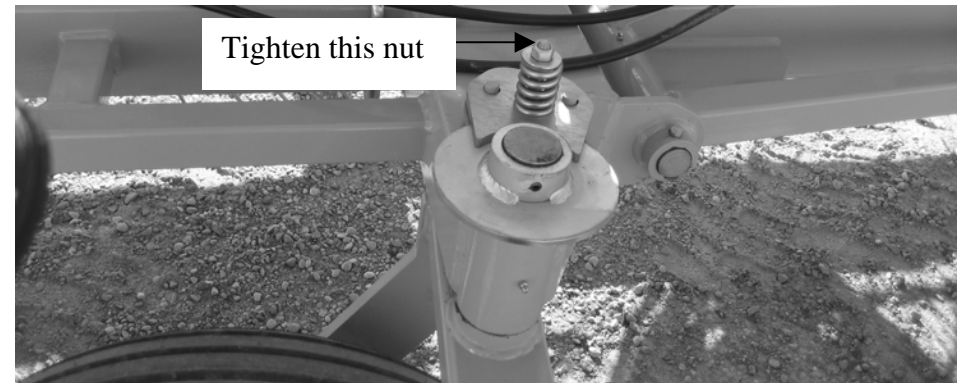
The transport links must also be installed. These links attach to the outside of the main frame and the inside of the rake arms. The links must be adjusted so that they are evenly spaced. Ensure that the links have the proper pins and cotter pins in place. To be able to place the lock in place the back needs to be in the narrow position.



Make sure that you have attached a safety chain to the hitch through the safety chain hole.



Align the road wheels and tighten the brake springs for all casters. The caster wheels will whip if the brakes are not sufficiently tight!



Ensure that all of the tires are at the correct pressure and that all wheel bolts are secured.

## **REAR HITCH ADJUSTMENT**

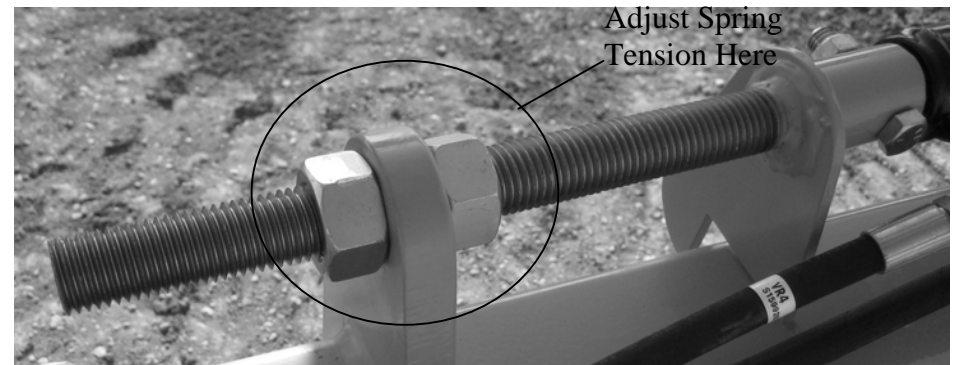
The rear hitch of the V-Rake is adjustable by the 20" stroke cylinder. It must be in the narrow position to be able to transport on highway. Widening the rear hitch will space the rake wheels further apart, creating a wider windrow. Pulling the rear hitch closer together will also pull the rake wheels closer together, and make a tighter swath.

This cylinder adjusts the back end

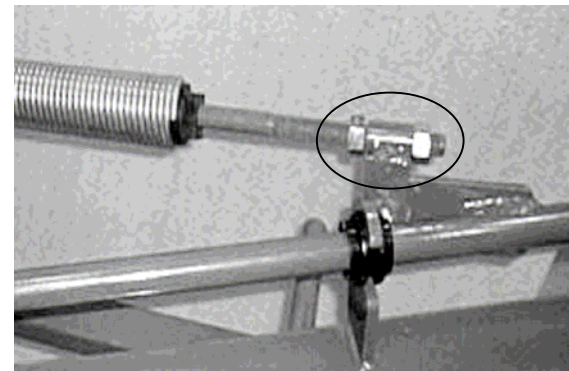


## **ADJUSTING RAKE WHEEL ARM SPRING TENSION**

The tension in the spring arms comes pre-set. If the tension in the spring arms needs to be adjusted there are a number of ways to accomplish this. The first is by moving the threaded rod adjusters. The threaded rod adjusters are located at the rear end of each rake arm and are directly attached to the lift rod cylinder. By adjusting the bolts attached to the rod adjusters the tension in all the springs of that rake arm are adjusted evenly.



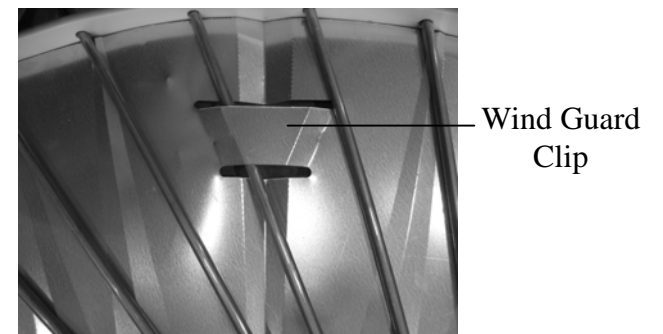
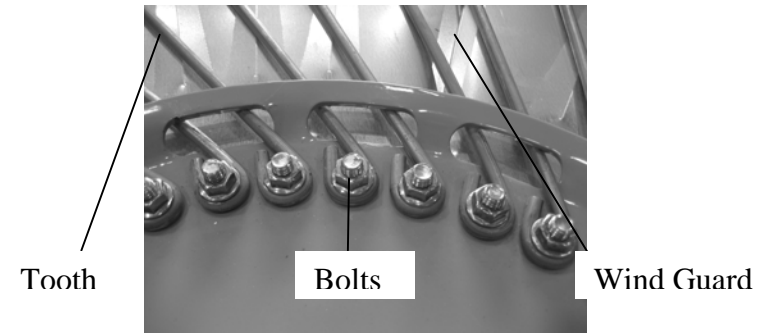
If the spring tension in only one spring needs to be adjusted then the adjustment can be done on the individual spring. There are two nuts near the end of the spring that allow the spring to be loosened or tightened.



## **TINE REPLACEMENT**

If a tine on one of the rake wheels needs to be replaced, the following procedure can be used:

- The bolt on the back of the rake wheel that corresponds to that tine should be loosened and removed completely.
- Slide the tine out of the hole in the center disk.
- Slide the tine out of the wind guard tab if necessary.
- Slide the tine out of the hole in the outer ring.
- Insert the replacement tine in the same direction as the other tines on the rake wheel.
- Then insert the bolt back in to the wind guard and tighten the nut.



## **SPECIFICATIONS**

Overall Length ..... 45' 5"

Overall Width ..... 10' 5"

Overall Height..... 6' 8"

### **Overall Weight**

16 Wheel .....6206 lbs.

18 Wheel .....6515 lbs.

20 Wheel .....7000 lbs.

Tire Size ..... 9.5L15SL 8Ply

Tire Pressure .....44 psi.

### **Torque Settings (Wheel Bolts & Nuts)**

1/2" Dry 90 Lb.

9/16" Dry 120 Lb.

