

PARTS MANUAL

BALE KING

VORTEX 4100



BRIDGEVIEW

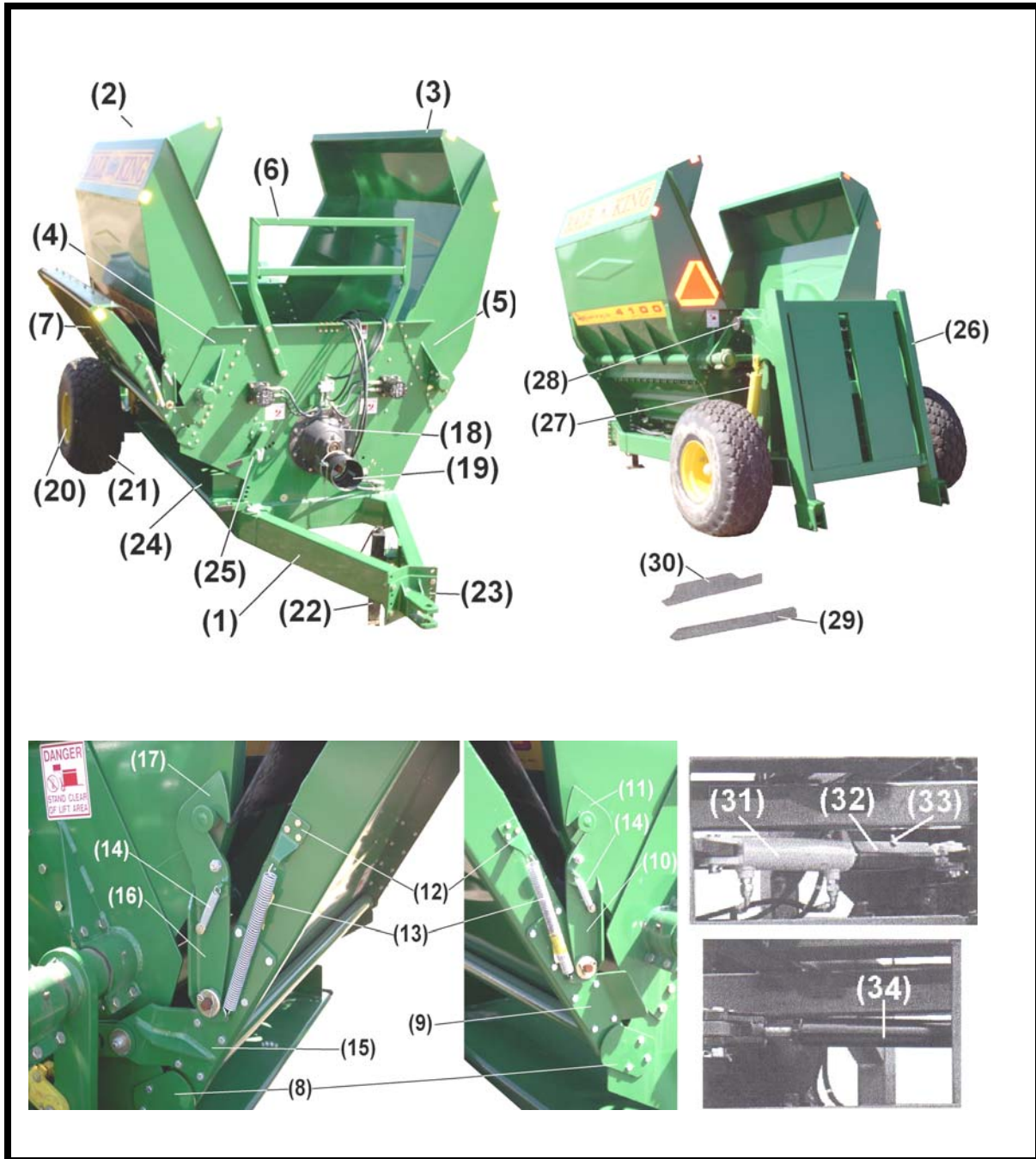
MANUFACTURED BY: BRIDGEVIEW MANUFACTURING INC.
P.O. BOX 4
GERALD, SASK. CANADA
S0A 1B0
PHONE: (306) 745-2711
FAX: (306) 745-3364

TABLE OF CONTENTS

BALE KING VORTEX 4100

| | |
|--|---------|
| EXTERNAL PARTS AND CONTROLS..... | 1 - 5 |
| SWITCH..... | 5A |
| HUB ASSEMBLY..... | 6 |
| PTO ASSEMBLIES..... | 7 - 12 |
| INNER TUB PARTS..... | 13 - 14 |
| HYDRAULIC ASSEMBLIES..... | 15 - 18 |
| HYDRAULIC SCHEMATICS..... | 19 - 20 |
| RIGHT HAND GEARBOX..... | 21 - 22 |
| FINE CHOP OPTION (SIDE MOUNT)..... | 23 |
| MODELS WITH SERIAL # BK3701 AND BELOW | |
| FINE CHOP OPTION (BOTTOM MOUNT)..... | 24 |
| SPRING ASSISTED DEFLECTOR..... | 25 - 26 |
| HYDRAULIC SCHEMATICS..... | 27 - 28 |
| OPTIONAL ATTACHMENTS..... | 29 - 30 |

EXTERNAL PARTS AND CONTROLS



EXTERNAL PARTS AND CONTROLS

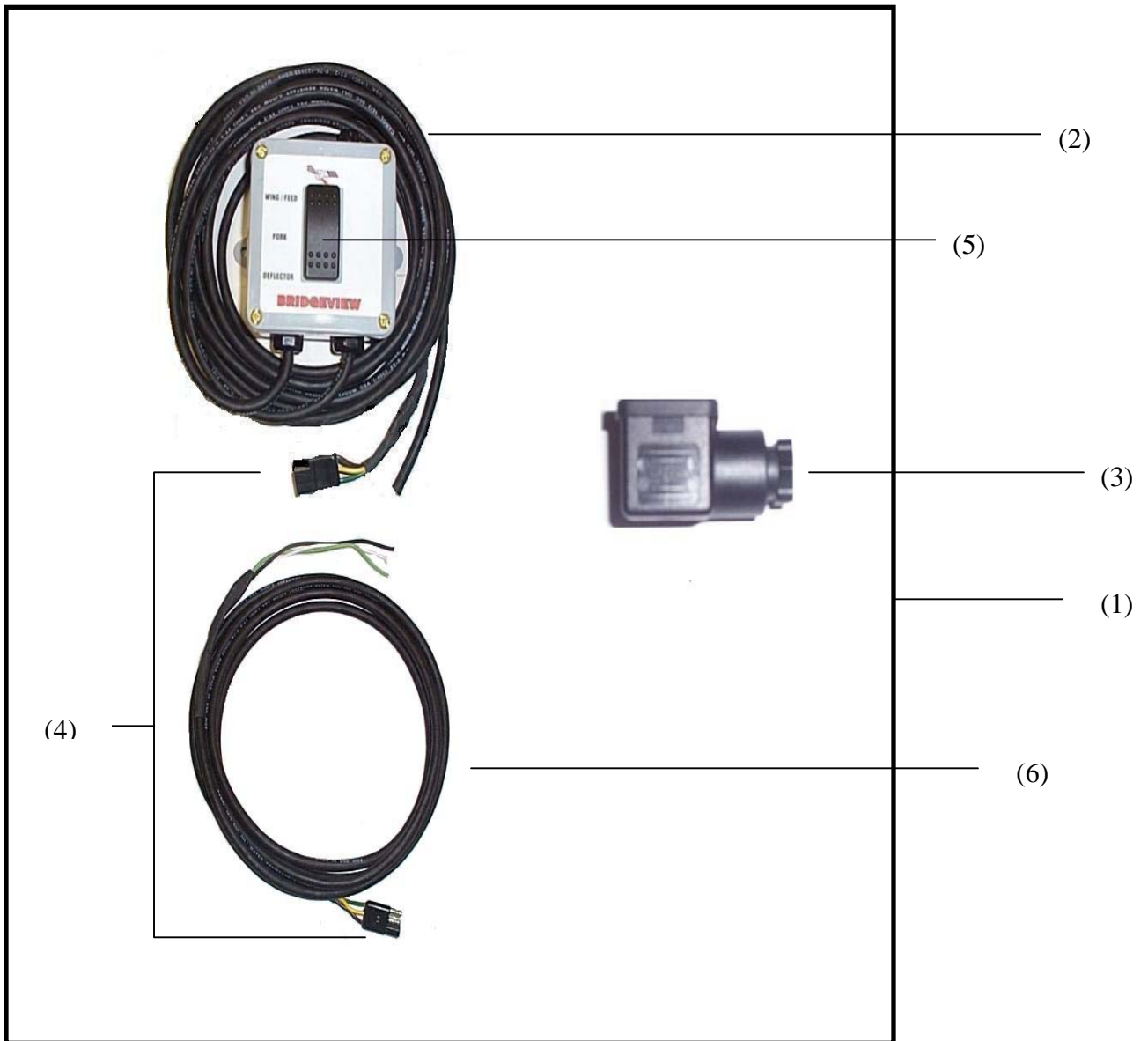
PARTS LIST

| <u>Ref#</u> | <u>BMI#</u> | <u>Description</u> | <u>Qty.</u> |
|-------------|-------------|---|-------------|
| 1 | N/A | Main Frame | 1 |
| 2 | 16751 | RH Wing | 1 |
| 3 | 16752 | LH Wing | 1 |
| 4 | 16758 | Wing Pivot (RH Front, LH Rear) | 2 |
| 5 | 16757 | Wing Pivot (LH Front, RH Rear) | 2 |
| Not Shown | 10280 | Grease Zerk | 4 |
| Not Shown | 16765 | Wing Pivot Clamp w/o Zerk Hole | 4 |
| Not Shown | 14460 | 1/2" x 1" NC Bolt | 52 |
| Not Shown | 10278 | 1/2" Serrated Flange Nut | 52 |
| Not Shown | 16764 | Wing Pivot Clamp w/Zerk Hole | 2 |
| Not Shown | 10280 | Grease Zerk | 2 |
| Not Shown | 14460 | 1/2" x 1" NC Bolt | 8 |
| Not Shown | 10278 | 1/2" Serrated Flange Nut | 8 |
| 6 | 16756 | Front Rack | 1 |
| Not Shown | 15396 | 1/2" x 3" NC Bolt | 6 |
| Not Shown | 13790 | 1/2" Flat Washer | 6 |
| Not Shown | 10278 | 1/2" Serrated Flange Nut | 6 |
| 7 | 11807 | Side Deflector | 1 |
| 8 | 12815 | Deflector Mounts | 2 |
| Not Shown | 13806 | 3/8" x 1" NC Bolt | 6 |
| Not Shown | 11818 | 3/8" Serrated Flange Nut | 6 |
| 9 | 16761 | Mounting Plate for Deflector Hook (Front) | 1 |
| Not Shown | 13806 | 3/8" x 1" NC Bolt | 8 |
| Not Shown | 11818 | 3/8" Serrated Flange Nut | 8 |
| 10 | 13373 | Hook Bottom (Front) | 1 |
| Not Shown | 13788 | 1/2" x 1 1/4" Carriage Bolt | 1 |
| Not Shown | 16345 | 1/2" Fender Washer | 1 |
| Not Shown | 14443 | 1/2" Locknut | 1 |
| Not Shown | 10580 | 1/4" x 2" Cotter Pin | 1 |
| 11 | 13376 | Hook Top (Front) | 1 |
| 12 | 16759 | Spring Clip | 2 |
| Not Shown | 15404 | 1/4" x 3/4" NC Bolt | 6 |
| Not Shown | 11812 | 1/4" Serrated Flange Nut | 6 |
| 13 | 11787 | Tension Spring | 2 |
| 14 | 11788 | Tension Spring | 2 |
| 15 | 16760 | Mounting Plate for Deflector Hook (Rear) | 1 |
| Not Shown | 13806 | 3/8" x 1" NC Bolt | 8 |
| Not Shown | 11818 | 3/8" Serrated Flange Nut | 8 |
| 16 | 13375 | Hook Bottom (Rear) | 1 |

| | | | |
|-----------|-------|--|---|
| Not Shown | 13788 | 1/2" x 1 1/4" Carriage Bolt | 1 |
| Not Shown | 16345 | 1/2" Fender Washer | 1 |
| Not Shown | 14443 | 1/2" Locknut | 1 |
| Not Shown | 10580 | 1/4" x 2" Cotter Pin | 1 |
| Not Shown | 13372 | Slotted Bracket | 2 |
| Not Shown | 13804 | 1/2" x 2" NC Bolt | 1 |
| Not Shown | 14443 | 1/2" Locknut | 1 |
| Not Shown | 10239 | 1/2" Bushing | 2 |
| Not Shown | 16345 | 1/2" Fender Washer | 2 |
| Not Shown | 16416 | Rocker Arm (Bolt-on pivot) | 1 |
| Not Shown | 13370 | Rocker Arm (Weld-on pivot) | 1 |
| Not Shown | 13804 | 1/2" x 2" NC Bolt | 2 |
| Not Shown | 14443 | 1/2" Locknut | 1 |
| Not Shown | 10239 | 1/2" Bushing | 2 |
| Not Shown | 16345 | 1/2" Fender Washer | 2 |
| Not Shown | 10580 | 1/4" x 2" Cotter Pin | 1 |
| Not Shown | 16415 | Rocker Arm Pivot | 1 |
| Not Shown | 14460 | 1/2" x 1" NC Bolt | 4 |
| Not Shown | 10278 | 1/2" Serrated Flange Nut | 4 |
| Not Shown | 14472 | 1" Flat Washer | 2 |
| Not Shown | 10580 | 1/4" x 2" Cotter Pin | 1 |
| Not Shown | 10317 | Deflector Hydraulic Cylinder (See Page 18) | 1 |
| Not Shown | 10801 | 1/2" x 3 1/2" NC Bolt | 1 |
| Not Shown | 10516 | Deflector Cylinder Mount (Front Plate) | 1 |
| Not Shown | 13806 | 3/8" x 1" NC Bolt | 4 |
| Not Shown | 11818 | 3/8" Serrated Flange Nut | 4 |
| 17 | 13377 | Hook Top | 1 |
| Not Shown | 10288 | Channel Rubber Deflector | 1 |
| Not Shown | 10477 | Rubber Deflector 18" | 1 |
| Not Shown | 13806 | 3/8" x 1" NC Bolt | 8 |
| Not Shown | 13802 | 3/8" NC Locknut | 8 |
| 18 | 10420 | Right Hand Gearbox (See Page 21) | 1 |
| Not Shown | 14461 | 1/2" x 1 1/2" NC Bolt (Bondioli) | 8 |
| Not Shown | 15403 | 1/2" x 1 3/4" NC Bolt (Star) | 8 |
| Not Shown | 10278 | 1/2" Serrated Flange Nut | 8 |
| 19 | 10421 | PTO Shield | 1 |
| Not Shown | 13806 | 3/8" x 1" NC Bolt | 4 |
| Not Shown | 13773 | 3/8" Flat Washer | 4 |
| Not Shown | 13802 | 3/8" NC Locknut | 4 |
| 20 | 10354 | W14C x 16.1 8 – Rim - Yellow | 2 |
| 21 | 10355 | 16L x 16.1 Tire | 2 |
| 22 | 10458 | Telescoping Jack | 1 |
| 23 | 10281 | Hitch Assembly | 1 |
| Not Shown | 13800 | 3/4" x 2" NC Bolt | 4 |
| Not Shown | 13795 | 3/4" Lock Washer | 4 |
| Not Shown | 12455 | 3/4" NC Nut | 4 |

| | | | |
|-----------|--------------|--|----------|
| 24 | 10825 | Bottom Deflector | 1 |
| Not Shown | 11662 | 5/16" x 3/4" Carriage Bolt | 6 |
| Not Shown | 11815 | 5/16" Serrated Flange Nut | 6 |
| Not Shown | 14461 | 1/2" x 1 1/2" NC Bolt | 2 |
| Not Shown | 14443 | 1/2" NC Locknut | 2 |
| Not Shown | 16345 | 1/2" Fender Washer | 2 |
| Not Shown | 10239 | Deflector Bushing | 2 |
| Not Shown | 13806 | 3/8" x 1" NC Bolt | 2 |
| Not Shown | 11818 | 3/8" Serrated Flange Nut | 2 |
| Not Shown | 10231 | Plated S-Handle | 1 |
| Not Shown | 10301 | Compression Spring | 1 |
| Not Shown | 10302 | Roll Pin | 1 |
| Not Shown | 10297 | Rubber Grip | 1 |
| 25 | 10826 | Hoop Height Adjuster | 1 |
| Not Shown | 13806 | 3/8" x 1" NC Bolt | 4 |
| Not Shown | 11818 | 3/8" Serrated Flange Nut | 4 |
| Not Shown | 10297 | Rubber Handle Cover | 1 |
| Not Shown | 10231 | Plated S Handle | 1 |
| Not Shown | 10301 | Compression Spring | 1 |
| Not Shown | 10302 | Roll Pin | 1 |
| 26 | 10578 | Rear Fork Frame | 1 |
| Not Shown | 10579 | Pivot Pipe | 1 |
| Not Shown | 15411 | 1/2" x 4 3/4" NC Bolt | 1 |
| Not Shown | 10278 | 1/2" NC Locknut | 1 |
| Not Shown | 10280 | 1/4" Grease Zerk | 2 |
| Not Shown | 10580 | 1/4" x 2" Cotter Pin | 2 |
| 27 | | Fork Hydraulic Cylinder (See Page 15, 16) | 2 |
| Not Shown | 10339 | Butt End Cylinder | 2 |
| Not Shown | 10341 | Ram End Cylinder | 2 |
| Not Shown | 10580 | 1/4" x 2" Cotter Pin | 8 |
| Not Shown | 16640 | Cylinder Safety Lock | 1 |
| Not Shown | 12050 | PTO Clip, Safety Lock | 1 |
| 28 | 10504 | 3" Rubber Cap | 2 |
| 29 | 10303 | Bale Tine | 2 |
| 30 | 10234 | Small Bale Tine (Optional) | 2 |
| Not Shown | 10031 | Headed Pin | 2 |
| Not Shown | 10072 | 3/16" x 1 1/2" Cotter Pin | 2 |
| 31 | 10559 | Wing Hydraulic Cylinder (See Page 17) | 1 |
| Not Shown | 10339 | Cylinder Pin 2 3/8" | 1 |
| Not Shown | 10341 | Cylinder Pin 3" | 1 |
| Not Shown | 10580 | 1/4" Cotter Pin | 4 |
| 32 | 10585 | Safety Stop (Wings) | 1 |
| 33 | 10584 | Quick Pin | 1 |
| 34 | 10581 | Wing Linkage | 1 |
| Not Shown | 10341 | Cylinder Pin 3" | 2 |
| Not Shown | 10580 | 1/4" x 2" Cotter Pin | 4 |

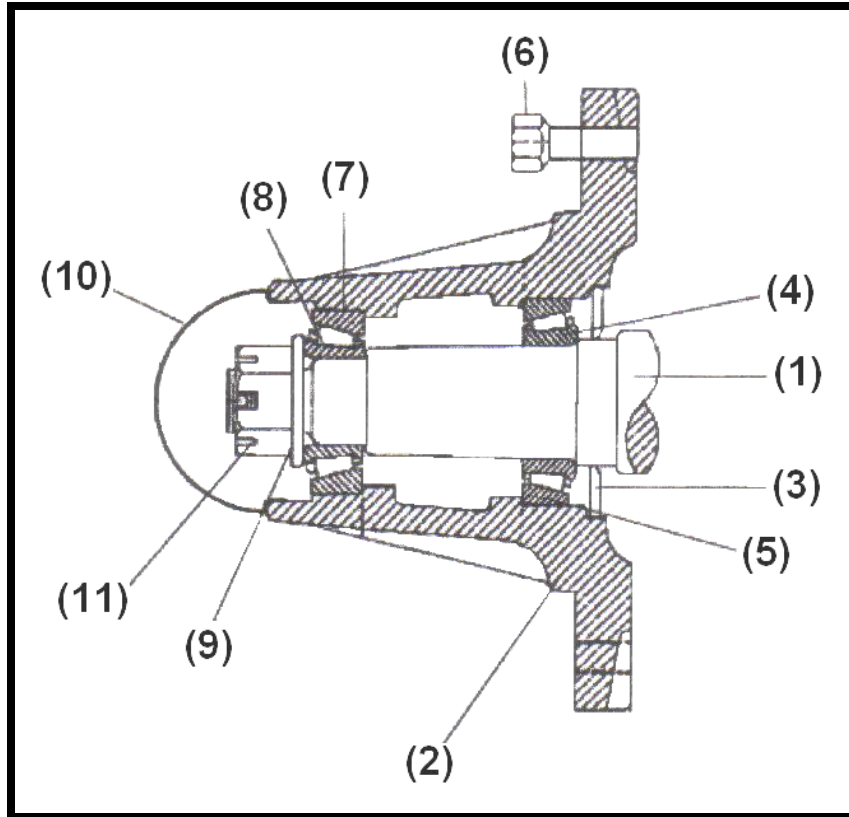
| | | | |
|-----------|-------|------------------------------------|---|
| Not Shown | 16640 | Cylinder Safety Lock | 1 |
| Not Shown | 12050 | PTO Clip, Safety Lock | 1 |
| Not Shown | 11742 | Splitter (See Page 19) | 1 |
| Not Shown | 13761 | 1/4" x 2" NC Bolt | 2 |
| Not Shown | 15402 | 1/4" NC Locknut | 2 |
| Not Shown | 13763 | 1/4" Washer | 2 |
| Not Shown | 11045 | Hydraulic Motors (See Page 19) | 2 |
| Not Shown | 11743 | Diverter (See Page 19) | 1 |
| Not Shown | 11783 | 5/16" x 3" Socket Head Bolt | 2 |
| Not Shown | 15870 | 5/16" NC Locknut | 2 |
| Not Shown | | Vortex Decals: | |
| | 12190 | Bale King | 2 |
| | 12189 | V4100 | 2 |
| | 12239 | PIMA | 1 |
| | 12521 | Patent | 1 |
| Not Shown | | Safety Decals: | |
| | 12229 | Danger Sign (Lift Area) | 2 |
| | 12230 | Danger Sign | 4 |
| | 12219 | Caution Sign | 2 |
| | 12228 | SMV | 1 |
| | 13324 | 1 1/2" x 3" Amber Reflective Decal | 5 |
| | 13325 | 1 1/2" x 3" Red Reflective Decal | 5 |



PARTS LIST

| <u>Ref #</u> | <u>BMI#</u> | <u>Description</u> | <u>Qty.</u> |
|--------------|-------------|---|-------------|
| 1 | 11801 | Complete control box with harness for 4000 series | 1 |
| 2 | 11793 | Control box complete with cab to hitch harness all 3000 & 4000 series | 1 |
| 3 | 13657 | Square plug for diverter valve | 1 |
| 4 | 13562 | 3 pin trailer plug | 1 |
| 5 | 13561 | 3 way switch | 1 |
| 6 | 11802 | Harness (hitch to valve) 4000 series | 1 |

HUB ASSEMBLY

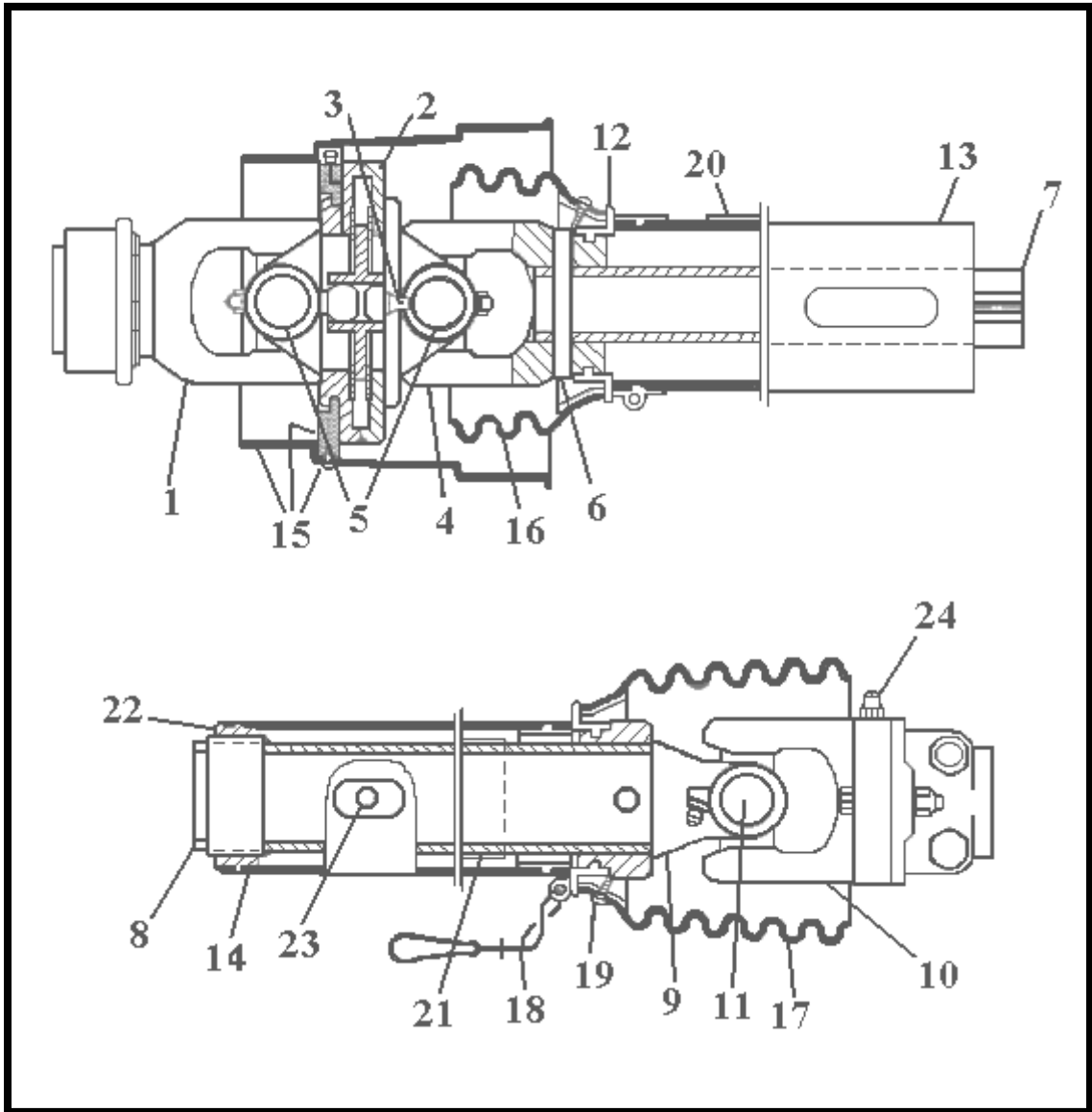


HUB ASSEMBLY

PARTS LIST

| <u>Ref#</u> | <u>BMI#</u> | <u>Description</u> | <u>Qty.</u> |
|-------------|-------------|------------------------------|-------------|
| 1 | 10342 | Spindle 2.25" x 15.5" | 2 |
| 2 | 10343 | Hub 6500 Series | 2 |
| 3 | 10344 | Dirt Seal | 2 |
| 4 | 10345 | Inner Bearing Cone | 2 |
| 5 | 10346 | Inner Bearing Cup | 2 |
| 6 | 10347 | 9/16" x 1 3/4" NF Wheel Stud | 16 |
| 7 | 10348 | Outer Bearing Cone | 2 |
| 8 | 10349 | Outer Bearing Cup | 2 |
| 9 | 10071 | 1 1/16" x 2" Flat Washer | 2 |
| Not Shown | 10072 | 3/16" x 1 1/2" Cotter Pin | 2 |
| 10 | 10350 | Dust Cap | 2 |
| 11 | 10153 | Castle Nut | 2 |

**PTO ASSEMBLY (WALTERSCHEID)
#10087**



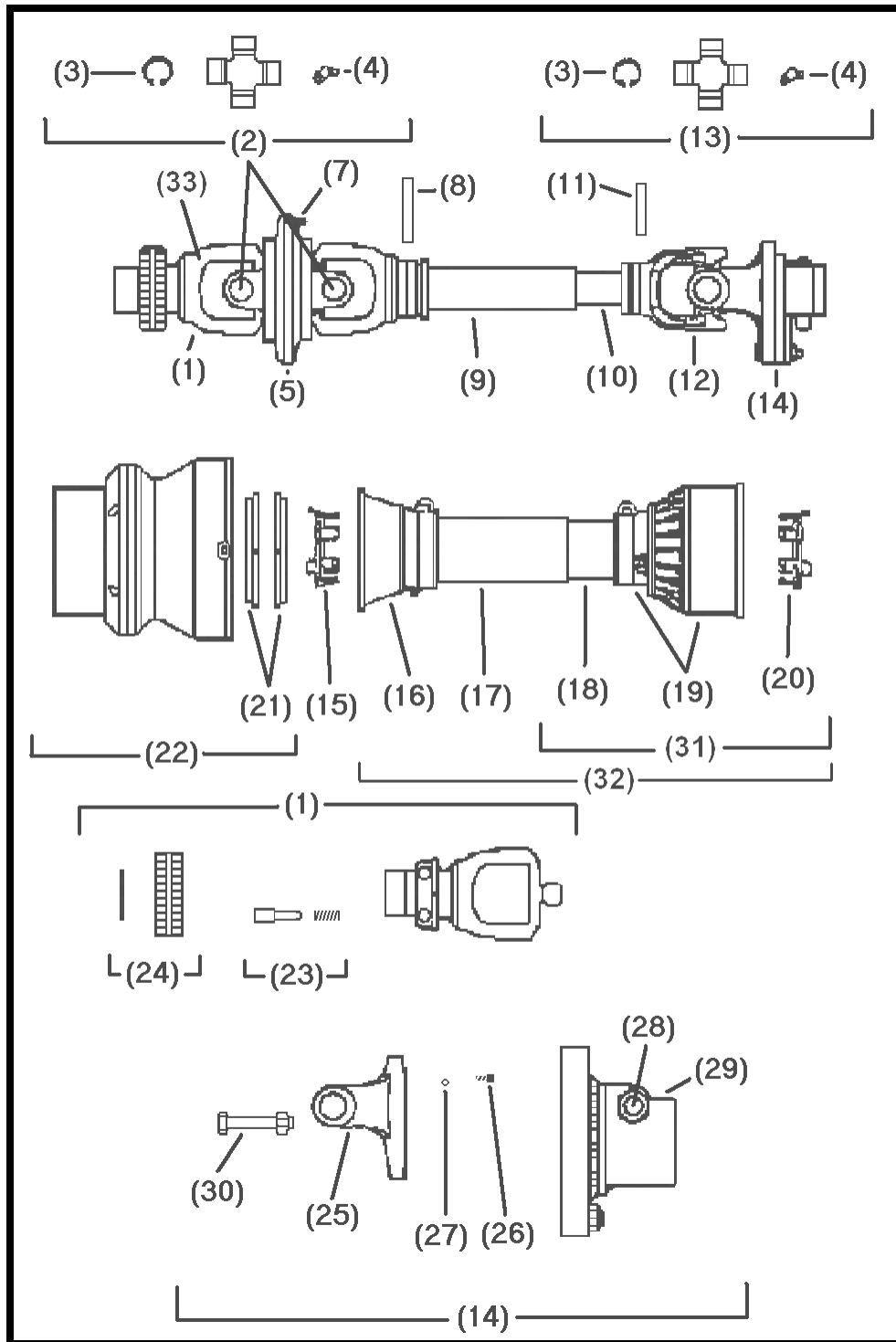
PTO ASSEMBLY (WALTERSCHEID)

PARTS LIST

| <u>Ref#</u> | <u>BMI#</u> | <u>Description</u> | <u>Qty.</u> |
|-------------|-------------|--|-------------|
| | 10087 | Complete PTO Assembly | |
| 1 | 10088 | Yoke 1 3/8" – 21 SPL. | 1 |
| 2 | 10090 | Double Yoke | 1 |
| 3 | N/A | Grease Zerk (Included with item 2) | 1 |
| 4 | 10091 | Inboard Yoke 1b | 1 |
| 5 | 10092 | Cross and Bearing Kit | 2 |
| 6 | 10093 | Spring Pin | 2 |
| 7 | 10095 | Inner Profile 1bGA | 1 |
| 8 | 10096 | Profile and Sleeve W.A. | 1 |
| 9 | 10097 | Inboard Yoke 2a | 1 |
| 10 | 10591 | Shear Bolt Clutch | 1 |
| 11 | 10094 | Cross and Bearing Kit | 1 |
| 12 | 10099 | Bearing Ring SC25 Shield | 2 |
| 13 | 10100 | Outer Shield Tube, Oval Shield | 1 |
| 14 | 10101 | Inner Shield Tube, Oval Shield | 1 |
| 15 | 10102 | CV Cone and Bearing Assembly Shield | 1 |
| 16 | 10103 | Shield Cone 3 Rib | 1 |
| 17 | 10104 | Shield Cone 6 Rib | 1 |
| 18 | 10105 | Safety Chain | 1 |
| 19 | 10108 | Screw (Included with items 15, 16 ,17) | 8 |
| 20 | 10106 | Decal Outer (Included with item 13) | 1 |
| 21 | 10107 | Decal Inner (Included with item 8) | 1 |
| 22 | 10109 | Support Bearing | 1 |
| 23 | 10110 | Grease Zerk (Included with item 8) | 1 |
| 24 | 10592 | 10mm Grease Zerk | 10 |
| Not Shown | 10113 | ASG. Col. Kit (Included with item 1) | 1 |
| Not Shown | 10470 | 10mm x 60mm Shear Bolt | 1 |
| Not Shown | 10471 | 10mm Locknut | 1 |

Walterscheid: Identified by *Accordian Style* bell shield on machine end of PTO

PTO ASSEMBLY (BONDIOLI) #10114

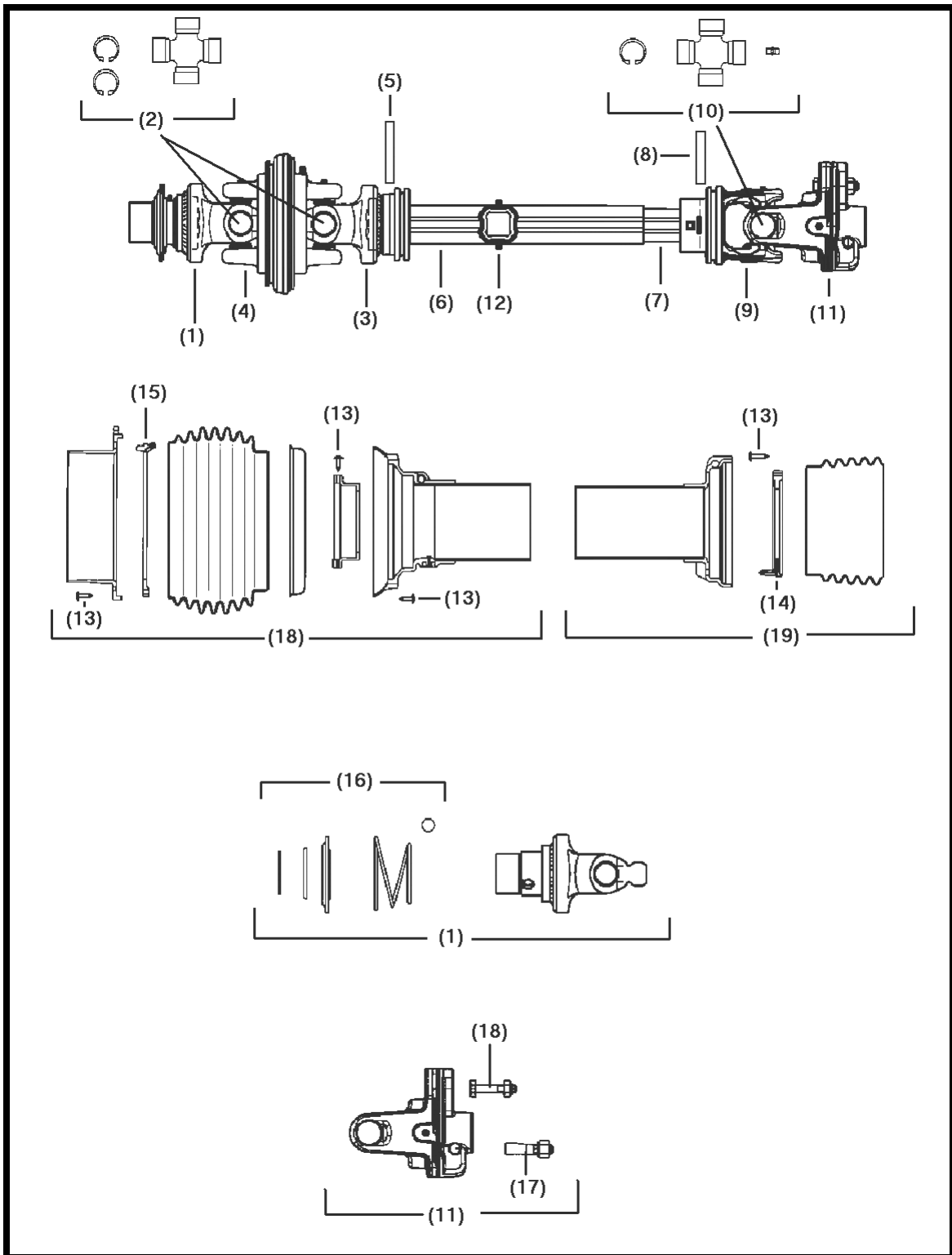


PTO ASSEMBLY (BONDIOLI)

PARTS LIST

| <u>Ref#</u> | <u>BMI#</u> | <u>Description</u> | <u>Qty.</u> |
|-------------|-------------|---------------------------------------|-------------|
| | 10114 | Complete PTO Assembly | |
| 1 | 10202 | Yoke w/Bridge (Sliding Collar) 1 3/8" | 1 |
| 2 | 10116 | U-Joint Cross Kit | 2 |
| 3 | N/A | Circlip (Included with Cross Kit) | 8 |
| 4 | N/A | Grease Zerk (Included with Cross Kit) | 2 |
| 5 | 10119 | Central Body CV Joint | 1 |
| 6 | 10120 | Yoke | 1 |
| 7 | 10121 | Grease Zerk | 1 |
| 8 | 10122 | Roll Pin | 1 |
| 9 | 10123 | Cardan Tube | 1 |
| 10 | 10124 | Cardan Tube CM | 1 |
| 11 | 10125 | Roll Pin | 1 |
| 12 | 10126 | Inner Tube Yoke | 1 |
| 13 | 10127 | U-Joint Cross Kit | 1 |
| 14 | 13703 | Torque Limiter (Quick Pin Style) | 1 |
| 15 | 10129 | Shield Support 6-7 | 1 |
| 16 | 10130 | Safety Cone | 1 |
| 17 | 10131 | CM Safety Tube | 1 |
| 18 | 10132 | SM Safety Tube | 1 |
| 19 | 10133 | I Cone Sets F5-6-7 | 1 |
| 20 | 10134 | Shield Support 6-7 | 1 |
| 21 | 10135 | Ring Nut Dowell | 1 |
| 22 | 10136 | Complete Shell | 1 |
| 23 | 10137 | Complete Push Bottom | 1 |
| 24 | 10138 | Hub | 1 |
| 25 | N/A | Yoke (Included w/item 13703) | 1 |
| 26 | 10140 | Grease Zerk | 1 |
| 27 | 10141 | Ball 5/16 | 1 |
| 28 | N/A | Nut Sold with Item #29 | 1 |
| 29 | 10406 | Wedge Lock on machine Yoke | 1 |
| 30 | 10407 | Shear Bolt (Pkg. of 5) | 1 |
| 31 | 10150 | Half Shaft Shield (Impl. end) | 1 |
| 32 | 10151 | Safety Shield – Complete | 1 |
| 33 | 10152 | Yoke 1 3/4" 20-Spline | 1 |

PTO ASSEMBLY (BONDIOLI) #12574

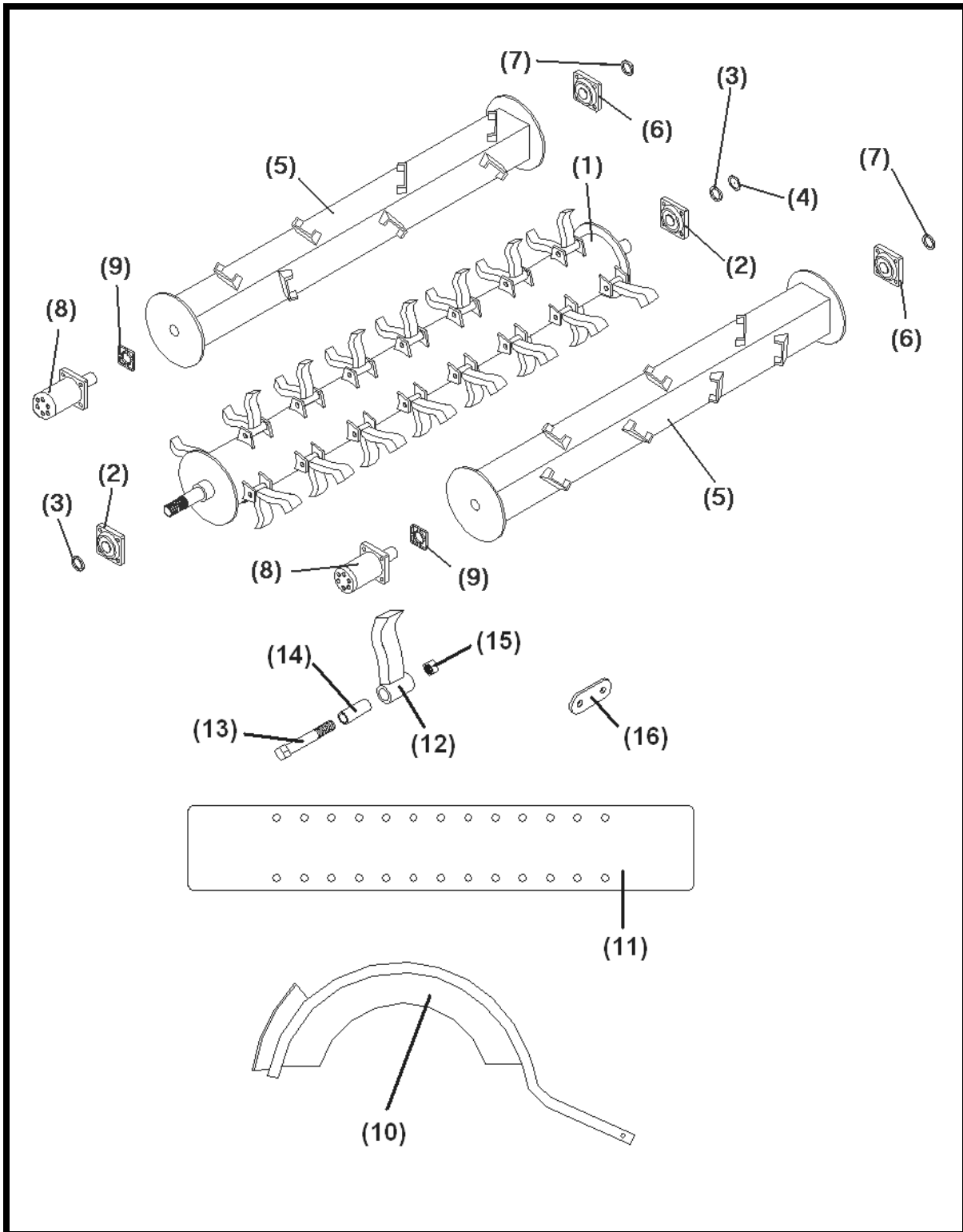


PTO ASSEMBLY (BONDIOLI)

PARTS LIST

| <u>Ref#</u> | <u>BMI#</u> | <u>Description</u> | <u>Qty.</u> |
|-------------|-------------|-------------------------|-------------|
| | 12574 | Complete PTO Assembly | |
| 1 | 13564 | Yoke | 1 |
| 2 | 13563 | U-Joint Cross Kit | 2 |
| 3 | 13568 | Yoke | 1 |
| 4 | 13565 | CV Body | 1 |
| 5 | 10122 | Flexible Pin | 1 |
| 6 | 13566 | Cardan Tube | 1 |
| 7 | 13567 | Inner Cardan Tube | 1 |
| 8 | 10125 | Flexible Pin | 1 |
| 9 | 13569 | Yoke | 1 |
| 10 | 13022 | U-Joint Cross Kit | 1 |
| 11 | 13570 | LB Torque Limiter | 1 |
| 12 | 13571 | Grease Zerk | 2 |
| 13 | 13572 | Shield Screw | 17 |
| 14 | 13609 | Ring for Inner Cone | 1 |
| 15 | 13610 | Lauftring for Front CV | 1 |
| 16 | 13575 | Lock Assembly Front CV | 1 |
| 17 | 13577 | Wedge Lock | 1 |
| 18 | 13576 | Shear Bolt | 1 |
| 19 | 13573 | Shield Assembly – Outer | 1 |
| 20 | 13574 | Shield Assembly – Inner | 1 |

INNER TUB PARTS

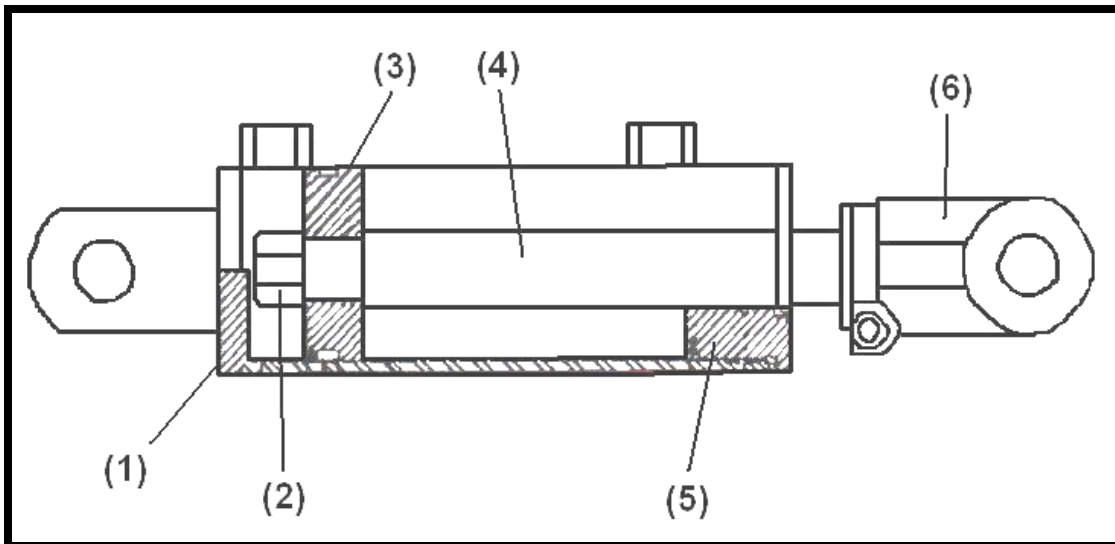


INNER TUB PARTS

PARTS LIST

| <u>Ref#</u> | <u>BMI#</u> | <u>Description</u> | <u>Qty.</u> |
|-------------|-------------|---------------------------------------|-------------|
| 1 | 10260 | Rotor | 1 |
| 2 | 10221 | 1 15/16" Rotor Bearings | 2 |
| Not Shown | 10270 | 1/8" NPT Grease Zerk | 2 |
| Not Shown | 10274 | 5/8" x 1 3/4" NF Bolt | 8 |
| Not Shown | 15398 | 5/8" Flange Locknut | 8 |
| Not Shown | 10477 | Right Hand Rotor Support | 1 |
| Not Shown | 15399 | 7/16" x 2 3/4" NC Bolt | 4 |
| Not Shown | 10799 | 7/16" Locknut | 4 |
| Not Shown | 10229 | Rotor & Beater Twine Guard | 6 |
| Not Shown | 13806 | 3/8" x 1" NC Bolt | 24 |
| Not Shown | 11818 | 3/8" Serrated Flange Nut | 16 |
| Not Shown | 13802 | 3/8" Locknut | 4 |
| Not Shown | 13772 | 3/8" Flat Washer | 2 |
| 3 | 10268 | 1 15/16" Lock Collar | 2 |
| 4 | 10227 | Split Collar | 1 |
| 5 | 12802 | Beaters | 2 |
| 6 | 10038 | 1 3/4" Bearings (Beaters) | 2 |
| Not Shown | 10270 | 1/8" NPT Grease Zerk | 2 |
| Not Shown | 14461 | 1/2" x 1 1/2" NC Bolt | 8 |
| Not Shown | 10278 | 1/2" Serrated Flange Nut | 8 |
| 7 | 10040 | 1 3/4" Lock Collar | 2 |
| 8 | 10045 | Hydraulic Beater Motors (See Page 19) | 2 |
| Not Shown | 10172 | 1/2" x 2 1/2" NC Socket Head bolt | 8 |
| Not Shown | 10183 | 1/2" Lock Washer | 8 |
| Not Shown | 10278 | 1/2" NC Serrated Flange Nut | 8 |
| 9 | 10021 | Coupler Assembly | 2 |
| 10 | 10463 | Hoop | 11 |
| Not Shown | 13769 | 3/8" x 2 1/4" NC Bolt | 11 |
| Not Shown | 13806 | 3/8" x 1" NC Bolt | 22 |
| Not Shown | 13802 | 3/8" NC Locknut | 33 |
| 11 | 10514 | Charging Panel | 1 |
| 12 | 10223 | Flail (Replace in Pairs) | 30 |
| 13 | 10443 | Shoulder Bolt | 30 |
| 14 | 10005 | Flail Bushing | 30 |
| 15 | 10007 | 3/4" NC Locknut | 30 |
| 16 | 10513 | Hoop Adjustment Shackle | 2 |
| Not Shown | 14461 | 1/2" x 1 1/2" NC Bolt | 4 |
| Not Shown | 16345 | 1/2" Fender Washer | 4 |
| Not Shown | 10239 | 1/2" Bushing | 4 |
| Not Shown | 14443 | 1/2" NC Locknut | 4 |

HYDRAULIC CYLINDER (FORKS) 1 1/4" SHAFT

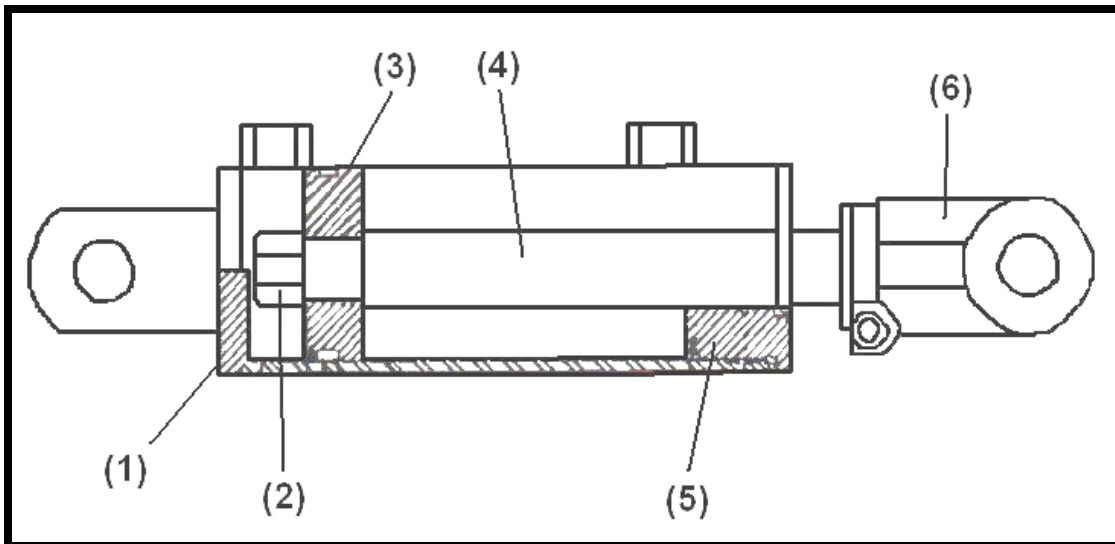


HYDRAULIC CYLINDER (FORKS) 1 1/4" SHAFT

PARTS LIST

| <u>Ref#</u> | <u>BMI#</u> | <u>Description</u> | <u>Qty.</u> |
|-------------|-------------|-----------------------------|-------------|
| | 10528 | Hydraulic Cylinder Assembly | |
| 1 | 10535 | Barrel Assembly w/Clevis | 1 |
| 2 | 10062 | Locknut Piston Rod | 1 |
| 3 | 10536 | Piston 3" Dia. | 1 |
| 4 | 10537 | Cylinder Shaft | 1 |
| 5 | 10538 | Gland | 1 |
| 6 | 10061 | Clevis | 1 |
| Not Shown | 10539 | Seal Kit | 1 |

HYDRAULIC CYLINDER (FORKS) 1 1/2" SHAFT

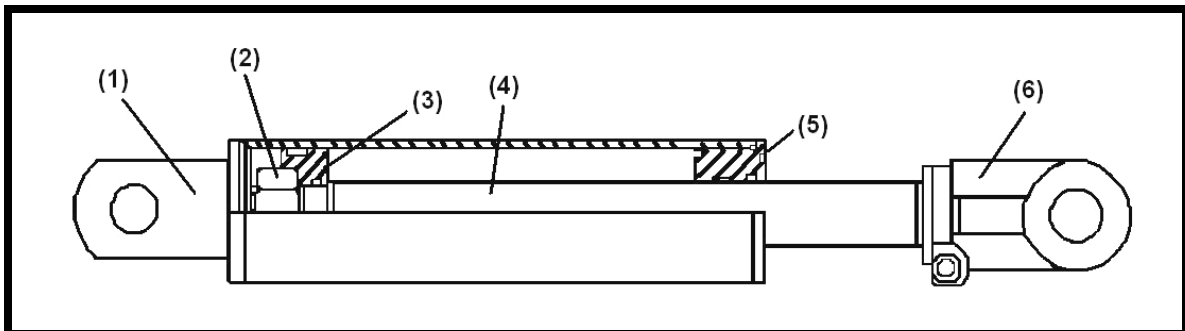


HYDRAULIC CYLINDER (FORKS) 1 1/2" SHAFT

PARTS LIST

| <u>Ref#</u> | <u>BMI#</u> | <u>Description</u> | <u>Qty.</u> |
|-------------|-------------|-----------------------------|-------------|
| | 12865 | Hydraulic Cylinder Assembly | |
| 1 | 10535 | Barrel Assembly w/Clevis | 1 |
| 2 | 10062 | Locknut Piston Rod | 1 |
| 3 | 12875 | Piston | 1 |
| 4 | 12873 | Cylinder Shaft | 1 |
| 5 | 12874 | Gland | 1 |
| 6 | 10061 | Clevis | 1 |
| Not Shown | 12872 | Seal Kit | 1 |

HYDRAULIC CYLINDER (WINGS)

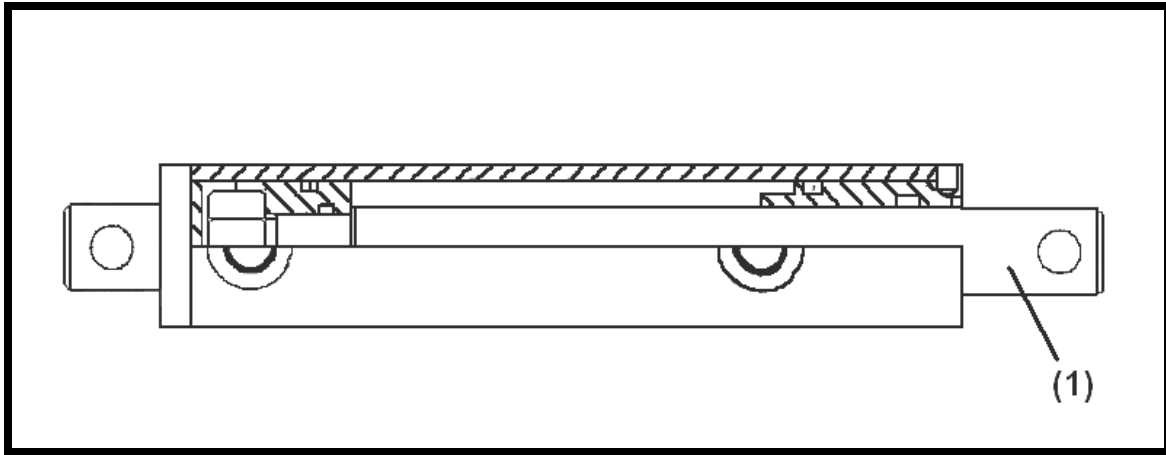


HYDRAULIC CYLINDER (WINGS)

PARTS LIST

| <u>Ref#</u> | <u>BMI#</u> | <u>Description</u> | <u>Qty.</u> |
|-------------|-------------|-----------------------------|-------------|
| | 10559 | Hydraulic Cylinder Assembly | 1 |
| 1 | 10589 | Barrel Assembly | 1 |
| 2 | 10062 | Locknut | 1 |
| 3 | 10519 | Piston | 1 |
| 4 | 10590 | Shaft, 2.5" x 8" | 1 |
| 5 | 10060 | Gland | 1 |
| 6 | 10061 | Clevis | 1 |
| Not Shown | 10521 | Seal Kit | 1 |

HYDRAULIC CYLINDER (DEFLECTOR)

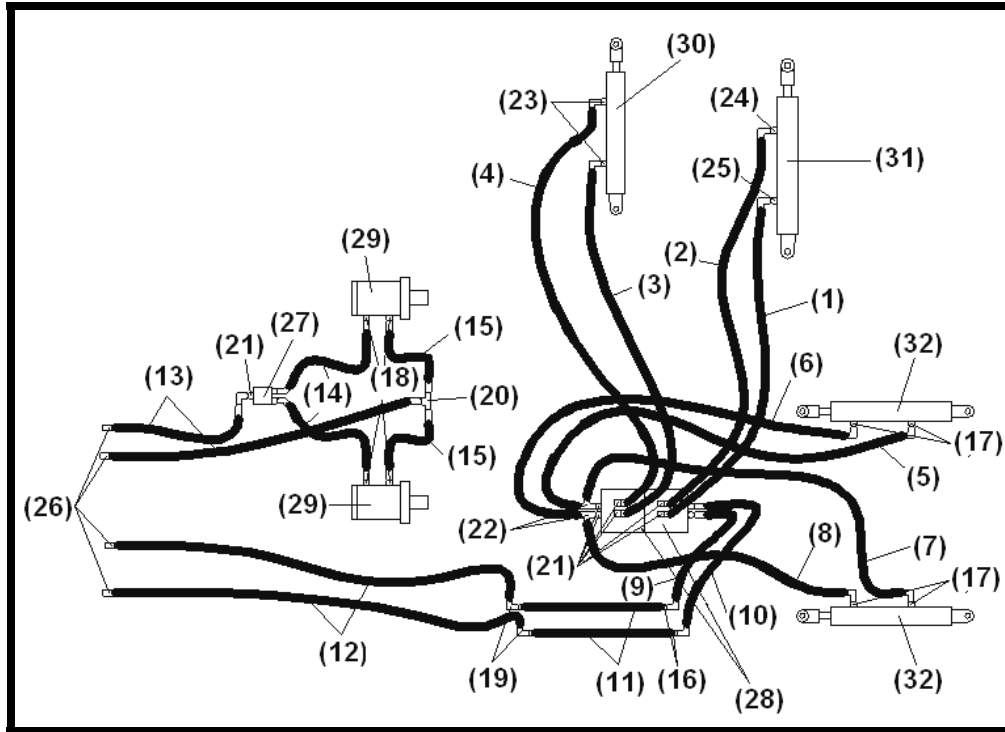


HYDRAULIC CYLINDER (DEFLECTOR)

PARTS LIST

| <u>Ref#</u> | <u>BMI#</u> | <u>Description</u> | <u>Qty.</u> |
|-------------|-------------|-----------------------------|-------------|
| | 10317 | Hydraulic Cylinder Assembly | 1 |
| 1 | 16746 | 1" Cylinder Shaft | 1 |
| Not Shown | 10318 | Seal Kit | 1 |

HYDRAULIC SCHEMATICS



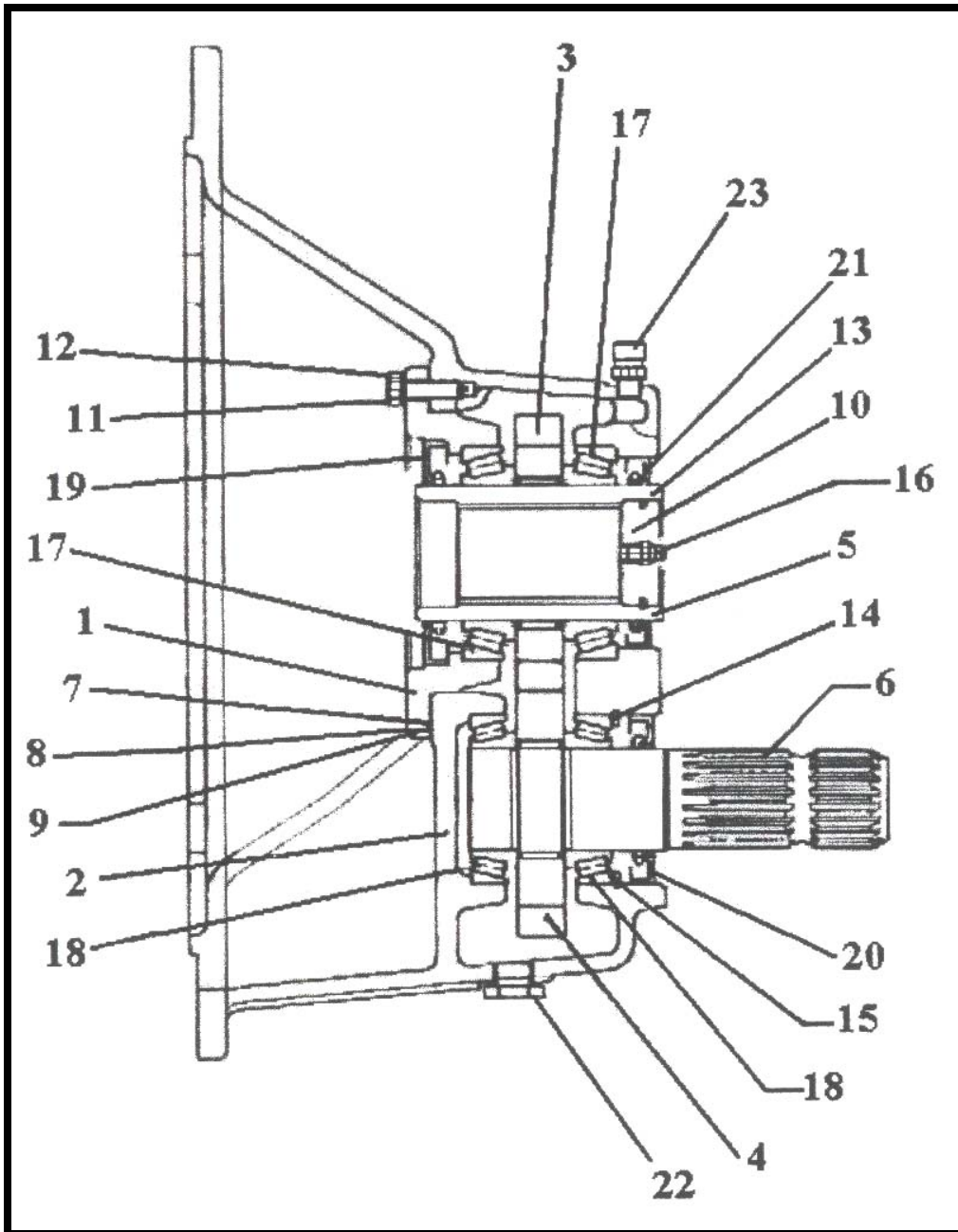
HYDRAULIC SCHEMATICS

PARTS LIST

| <u>Ref#</u> | <u>BMI#</u> | <u>Description</u> | <u>Qty.</u> |
|-------------|-------------|--------------------------------|-------------|
| 1 | 11757 | Hose - 28" OAL 6FJX90 - 8FJX90 | 1 |
| 2 | 11758 | Hose - 32" OAL 6FJX90 - 8FJX90 | 1 |
| 3 | 11759 | Hose - 28" OAL 6FJX90 - 8FJX90 | 1 |
| 4 | 11760 | Hose - 32" OAL 6FJX90 - 6FJX90 | 1 |
| 5 | 11761 | Hose - 52" OAL 6FJX - 8FJX90 | 1 |
| 6 | 11762 | Hose - 67" OAL 6FJX90 - 8FJX90 | 1 |
| 7 | 11763 | Hose - 32" OAL 6FJX - 8FJX90 | 1 |
| 8 | 16755 | Hose - 25" OAL 6FJX - 8FJX90 | 1 |
| 9 | 11765 | Hose - 20" OAL 6FJX90 - 6FJX | 1 |
| 10 | 11766 | Hose - 23" OAL 6FJX90 - 6FJX | 1 |
| 11 | 10190 | Hose - 80" OAL 6FJX - 6FJX | 2 |
| 12 | 10195 | Hose - 120" OAL 6FJX - 8MP | 2 |
| 13 | 11727 | Hose - 102" OAL 6FJX90 - 8MP | 2 |
| 14 | 11726 | Hose - 21" OAL 6FJX45 - 8FJX | 2 |
| 15 | 11724 | Hose - 17" OAL 6FJX - 8FJX | 2 |
| 16 | 11767 | Adapter - 6MJ - 6MJBH | 2 |

| | | | |
|-----------|-------|--|---|
| 17 | 11740 | Adapter – 8MB – 6MJ | 6 |
| 18 | 10161 | Adapter – 8MB – 6MJ | 6 |
| 19 | 10187 | Adapter – 6MJ – 6MJ90BH | 2 |
| 20 | 10188 | Adapter – 6MJBH – 6MJT | 2 |
| 21 | 11739 | Adapter – 10MB – 6MJ | 7 |
| 22 | 11768 | Adapter – 8FJXR – 8MJT | 2 |
| 23 | 10162 | Adapter – 6MB – 6MJ | 2 |
| 24 | 10561 | Adapter – 8MB – 8MJ | 1 |
| 25 | 10562 | 1/32” Orifice – 8MB – 8MJ | 1 |
| 26 | 10167 | Pioneer Tips | 4 |
| 27 | 11742 | Splitter | 1 |
| 28 | 11743 | Diverter | 2 |
| 29 | 10045 | Hydraulic Beater Motors | 2 |
| Not Shown | 10048 | Seal Kit | 1 |
| 30 | 10317 | Deflector Hydraulic Cylinder (See Page 18) | 1 |
| 31 | 10559 | Wing Hydraulic Cylinder | 1 |
| 32 | | Fork Hydraulic Cylinder (See Page 15, 16) | 2 |

RIGHT HAND GEARBOX

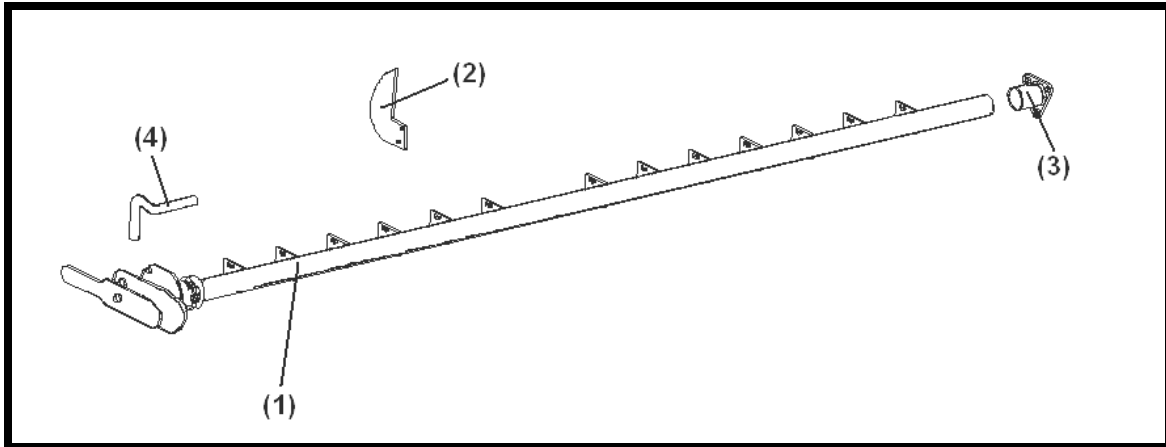


RIGHT HAND GEARBOX

PARTS LIST

| <u>Ref#</u> | <u>BMI#</u> | <u>Description</u> | <u>Qty.</u> |
|-------------|-------------|------------------------------|-------------|
| | 10420 | Right Hand Gearbox | 1 |
| 1 | 10480 | Flange Output Shaft | 1 |
| 2 | 10481 | Casting | 1 |
| 3 | 10482 | Output Gear | 1 |
| 4 | 10483 | Input Gear | 1 |
| 5 | 10484 | 1 3/4" Internal Output Shaft | 1 |
| 6 | 10485 | 1 3/4" Input Shaft | 1 |
| 7 | 10486 | Output Shaft Flange Shim | 1 |
| 8 | 10487 | Output Shaft Flange Shim | 1 |
| 9 | 10488 | Output Shaft Flange Shim | 1 |
| 10 | 10489 | Output Shaft Cover | 1 |
| 11 | 10490 | Bolt M8 x 25 x 1.25 cl. 8.8 | 6 |
| 12 | 10491 | Washer 8.2 x 14.8 x 1.6 | 6 |
| 13 | 10492 | Snap Ring | 1 |
| 14 | 10493 | Snap Ring 1.75 x 2.5 | 1 |
| 15 | 10494 | Shims | 1 |
| 16 | 10495 | Grease Fitting M8 x 1.25 | 1 |
| 17 | 10496 | Taper Roller Bearing | 2 |
| 18 | 10497 | Taper Roller Bearing | 2 |
| 19 | 10498 | Oil Seal 60 x 100 x 10 | 1 |
| 20 | 10499 | Oil Seal 45 x 75 x 10 | 1 |
| 21 | 10500 | Oil Seal 60 x 85 x 10 | 1 |
| 22 | 10501 | Drain Plug | 1 |
| 23 | 10502 | Breather Plug | 1 |

FINE CHOP OPTION (SIDE MOUNT)



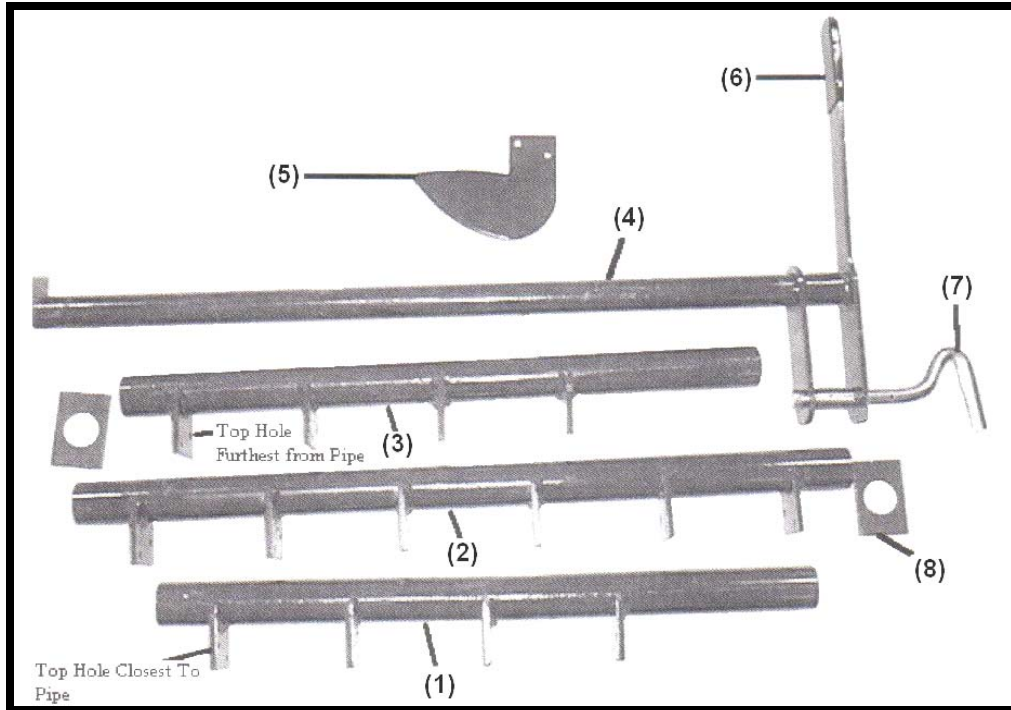
FINE CHOP OPTION (SIDE MOUNT)

PARTS LIST

| <u>Ref#</u> | <u>BMI#</u> | <u>Description</u> | <u>Qty.</u> |
|-------------|-------------|-------------------------------|-------------|
| | 12499 | Fine Chop Option (Side Mount) | |
| 1 | 11771 | Handle and Pipe Assembly | 1 |
| 2 | 10404 | Knife | 14 |
| Not Shown | 11810 | 1/4" x 1" NC Bolts | 28 |
| Not Shown | 15402 | 1/4" NC Locknut | 28 |
| 3 | 13450 | Sleeve Bracket | 1 |
| Not Shown | 13806 | 3/8" x 1" NC Bolt | 7 |
| Not Shown | 11818 | 3/8" Serrated Flange Nut | 7 |
| 4 | 10231 | Plated Handle | 1 |
| Not Shown | 10297 | Rubber Handle | 1 |
| Not Shown | 10302 | 3/16" x 1 1/4" Roll Pin | 1 |
| Not Shown | 10301 | Compression Spring | 1 |
| Not Shown | 12792 | Split Collar | 1 |

MODELS WITH SERIAL # BK3701 AND BELOW

FINE CHOP OPTION (BOTTOM MOUNT)

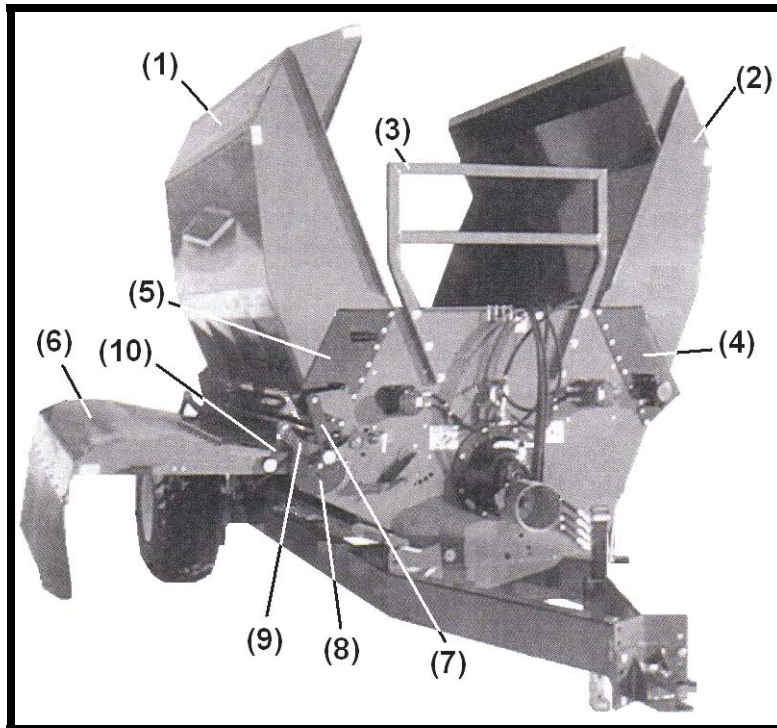


FINE CHOP OPTION (BOTTOM MOUNT)

PARTS LIST

| <u>Ref#</u> | <u>BMI#</u> | <u>Description</u> | <u>Qty.</u> |
|-------------|-------------|-------------------------|-------------|
| 1 | 10525 | End Knife Holder | 1 |
| 2 | 10526 | Middle Knife Holder | 1 |
| 3 | 10527 | End Knife Holder | 1 |
| 4 | 10523 | Handle w/Pipe | 1 |
| 5 | 10404 | Knife | 14 |
| 6 | 10297 | Rubber Handle | 1 |
| 7 | 10231 | Plated Handle | 1 |
| Not Shown | 10302 | 3/16" x 1 1/4" Roll Pin | 1 |
| 8 | 10524 | Rectangular Spacer | 2 |
| Not Shown | 10301 | Compression Spring | 1 |
| Not Shown | 13806 | 3/8" x 1" NC Bolt | 4 |
| Not Shown | 13802 | 3/8" NC Locknut | 4 |
| Not Shown | 11810 | 1/4" x 1" NC Bolt | 28 |
| Not Shown | 15402 | 1/4" NC Locknut | 28 |

SPRING ASSISTED DEFLECTOR



SPRING ASSISTED DEFLECTOR

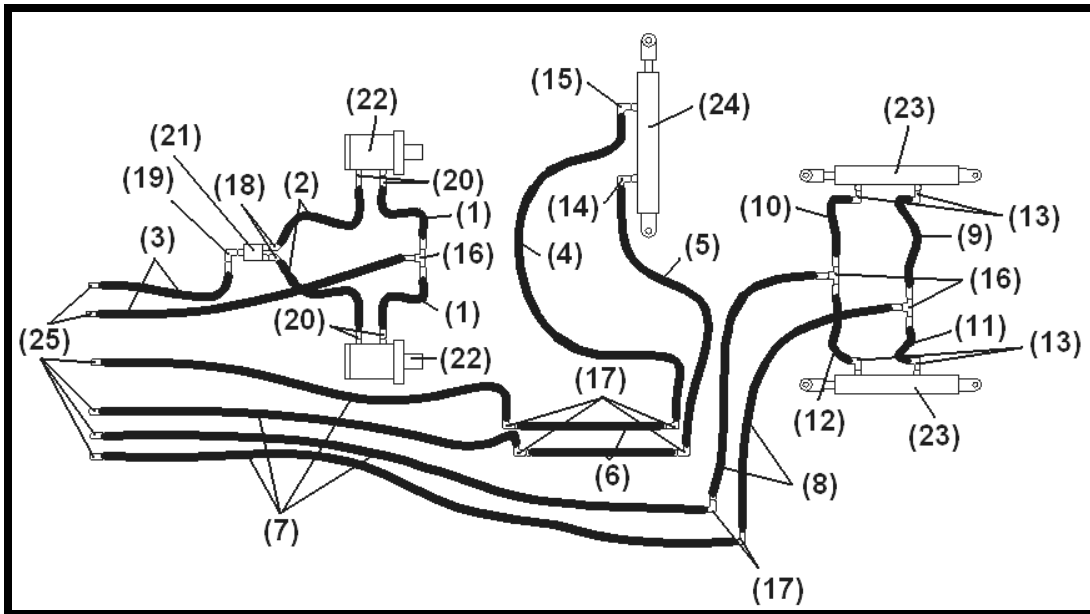
PARTS LIST

| <u>Ref#</u> | <u>BMI#</u> | <u>Description</u> | <u>Qty.</u> |
|-------------|-------------|--|-------------|
| 1 | 10588 | LH Wing Assembly | 1 |
| 2 | 10593 | RH Wing Assembly | 1 |
| 3 | 10571 | Front Rack | 1 |
| Not Shown | 15396 | 1/2" x 3" NC Bolt | 6 |
| Not Shown | 13790 | 1/2" Flat Washer | 6 |
| Not Shown | 10278 | 1/2" Serrated Flange Nut | 6 |
| 4 | 10569 | Wing Pivot (LH Front & RH Rear) | 2 |
| 5 | 10594 | Wing Pivot (RH Front w/Cylinder Bracket) | 1 |
| Not Shown | 10567 | Wing Pivot (LH Rear) | 1 |
| 6 | 10574 | Side Deflector | 1 |
| Not Shown | 12815 | Deflector Mounts | 2 |
| Not Shown | 13806 | 3/8" x 1" NC Bolt | 6 |
| Not Shown | 13772 | 3/8" Flat Washer | 6 |
| Not Shown | 11818 | 3/8" Serrated Flange Nut | 6 |
| Not Shown | 10296 | Flat Rubber Grip | 1 |

| | | | |
|-----------|--------------|---------------------------------------|---|
| Not Shown | 10509 | Handle Side Deflector | 1 |
| Not Shown | 13806 | 3/8" x 1" NC Bolt | 2 |
| Not Shown | 13802 | 3/8" Locknut | 2 |
| 7 | 10577 | Slide Linkage | 4 |
| Not Shown | 13804 | 1/2" x 2" NC Bolt | 2 |
| Not Shown | 14443 | 1/2" Locknut | 2 |
| Not Shown | 10239 | 1/2" Bushing | 2 |
| Not Shown | 16345 | 1/2" Fender Washer | 2 |
| 8 | 10474 | Spring Plate | 2 |
| Not Shown | 14461 | 1/2" x 1 1/2" NC Bolt | 2 |
| Not Shown | 15403 | 1/2" x 1 3/4" NC Bolt | 2 |
| Not Shown | 16345 | 1/2" Fender Washer | 2 |
| Not Shown | 10239 | Bushing 1/2" x 1 1/4" | 2 |
| Not Shown | 10506 | Spring Bushing 9/16" x 2" x 1/2" | 2 |
| Not Shown | 10507 | Spacer 5/8" x 3/4" x 1/2" | 2 |
| Not Shown | 14443 | 1/2" NC Locknut | 2 |
| Not Shown | 10278 | 1/2" Serrated Flange Nut | 2 |
| Not Shown | 10466 | Spring Rear on RH Machine | 1 |
| | 10467 | Spring on Front on the RH Machine | 1 |
| 9 | 10461 | Lift Assembly (includes next 3 items) | 1 |
| Not Shown | 10231 | Plated S Handle | 1 |
| Not Shown | 10301 | Compression Spring | 1 |
| Not Shown | 10302 | Roll Pin | 1 |
| Not Shown | 13806 | 3/8" x 1" NC Bolt | 6 |
| Not Shown | 11818 | 3/8" Serrated Flange Nut | 6 |
| 10 | 10583 | Linkage, Main Deflector | 2 |
| Not Shown | 10587 | Spring Guide | 2 |
| Not Shown | 14461 | 1/2" x 1 1/2" NC Bolt | 2 |
| Not Shown | 10278 | 1/2" Serrated Flange Nut | 2 |
| Not Shown | 16345 | 1/2" Fender Washer | 4 |
| Not Shown | 10239 | Bushing 1/2" x 1 1/4" | 4 |

*** Replaces items 2 – 5, 6 – 7, 9 – 17 on Bale King, upto Serial #BK3702 in External Parts and Controls section**

HYDRAULIC SCHEMATICS



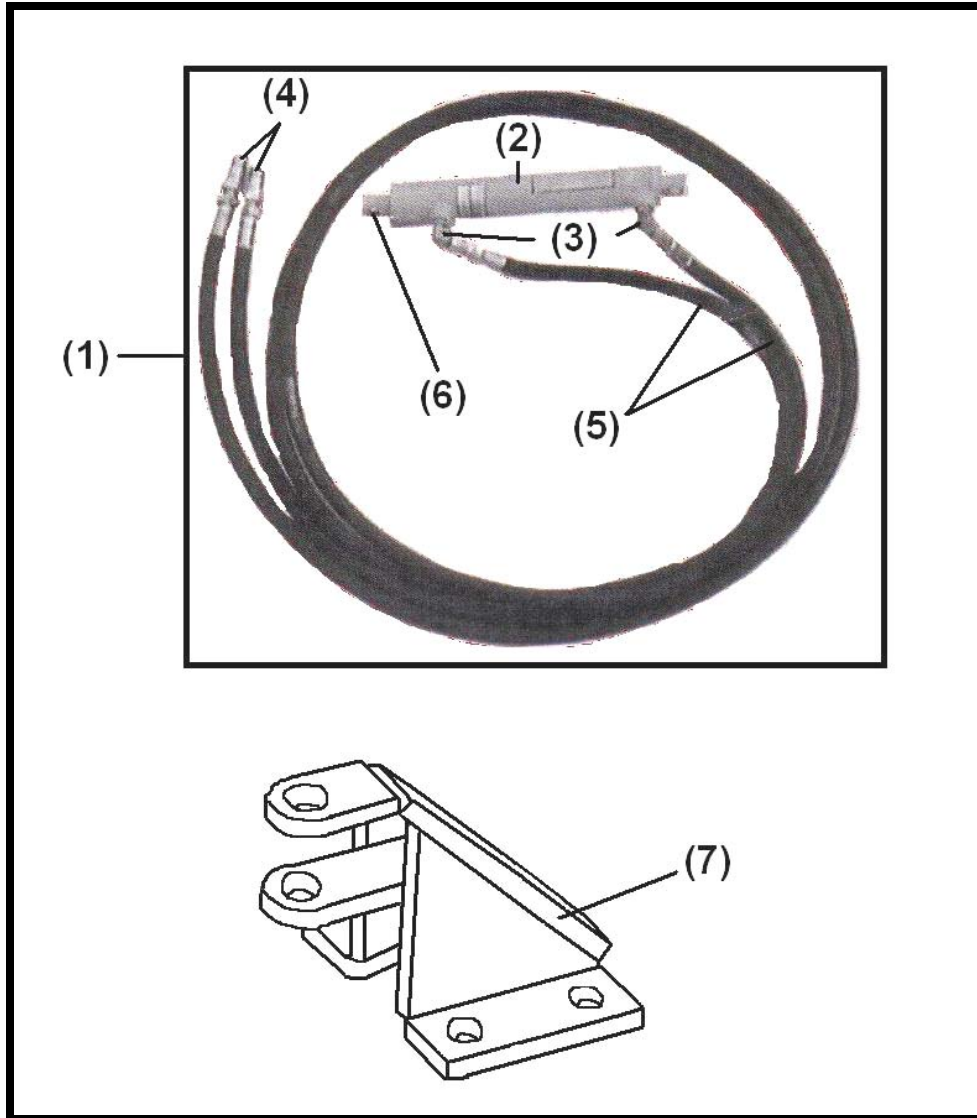
HYDRAULIC SCHEMATICS

PARTS LIST

| <u>Ref#</u> | <u>BMI#</u> | <u>Description</u> | <u>Qty.</u> |
|-------------|-------------|-----------------------------------|-------------|
| 1 | 10197 | Hose - 21" OAL 6FJX - 8FJX | 2 |
| 2 | 10198 | Hose - 18" OAL 6FJX - 8FJX | 2 |
| 3 | 10196 | Hose - 102" OAL 6FJX - 8MP | 2 |
| 4 | 10563 | Hose - 48" OAL 6FJX - 8FJX90 | 1 |
| 5 | 10564 | Hose - 54" OAL 6FJX - 8FJX90 | 1 |
| 6 | 10190 | Hose - 80" OAL 6FJX - 6FJX | 2 |
| 7 | 10195 | Hose - 120" OAL 6FJX - 8MP | 4 |
| 8 | 10335 | Hose - 82" OAL 6FJX - 6FJX | 2 |
| 9 | 10557 | Hose - 21" OAL 6FJX - 6FJX | 1 |
| 10 | 10560 | Hose - 41" OAL 6FJX - 6FJX | 1 |
| 11 | 10334 | Hose - 52" OAL 6FJX - 6FJX | 1 |
| 12 | 10558 | Hose - 70" OAL 6FJX - 6FJX | 1 |
| 13 | 10020 | Adapter - 8MB - 6MJ90 | 4 |
| 14 | 10562 | Adapter - 8MJ - 8MB 1/32" Orifice | 1 |
| 15 | 10561 | Adapter - 8MJ - 8MB | 1 |
| 16 | 10188 | Adapter - 6MJBH - 6MJT | 3 |
| 17 | 10161 | Adapter - 10MB - 8MJ | 6 |
| 18 | 10199 | Adapter - 8MB - 6MJ45 | 2 |
| 19 | 10020 | Adapter - 8MB - 6MJ90 | 1 |

| | | | |
|-----------|-------|---|---|
| 20 | 10161 | Adapter – 10MB – 8MJ | 4 |
| 21 | 11742 | Splitter | 1 |
| 22 | 10045 | Hydraulic Beater Motors | 2 |
| Not Shown | 10048 | Seal Kit | 1 |
| 23 | | Fork Hydraulic Cylinder (See Page 15, 16) | 2 |
| 24 | 10559 | Wing Hydraulic Cylinder (See Page 17) | 1 |
| 25 | 10167 | Pioneer Tips | 6 |

OPTIONAL ATTACHMENTS



OPTIONAL ATTACHMENTS

PARTS LIST

| <u>Ref#</u> | <u>BMI#</u> | <u>Description</u> | <u>Qty.</u> |
|-------------|-------------|---|-------------|
| 1 | 10316 | Hydraulic Lift Attachment | 1 |
| 2 | 10317 | Hydraulic Cylinder Assembly (See Page 18) | 1 |
| Not Shown | 10318 | Seal Kit | 1 |
| 3 | 10201 | Adaptor – 6MB – 6MJ90 | 2 |
| 4 | 10167 | Pioneer Male Tips | 2 |

| | | | |
|-----------|--------------|--|----------|
| 5 | 10320 | Hose – 120” | 2 |
| 6 | 15396 | 1/2” x 3” NC Bolt | 1 |
| Not Shown | 10239 | 1/2” x 1 1/4” Plated Bushing | 2 |
| Not Shown | 13804 | 1/2” x 2” NC Bolt | 1 |
| Not Shown | 14443 | 1/2” NC Locknut | 2 |
| 7 | 10516 | Bracket Hydraulic and Electric Lift | 1 |
| Not Shown | 13806 | 3/8” x 1” NC Bolt | 4 |
| Not Shown | 13802 | 3/8” NC Locknut | 4 |